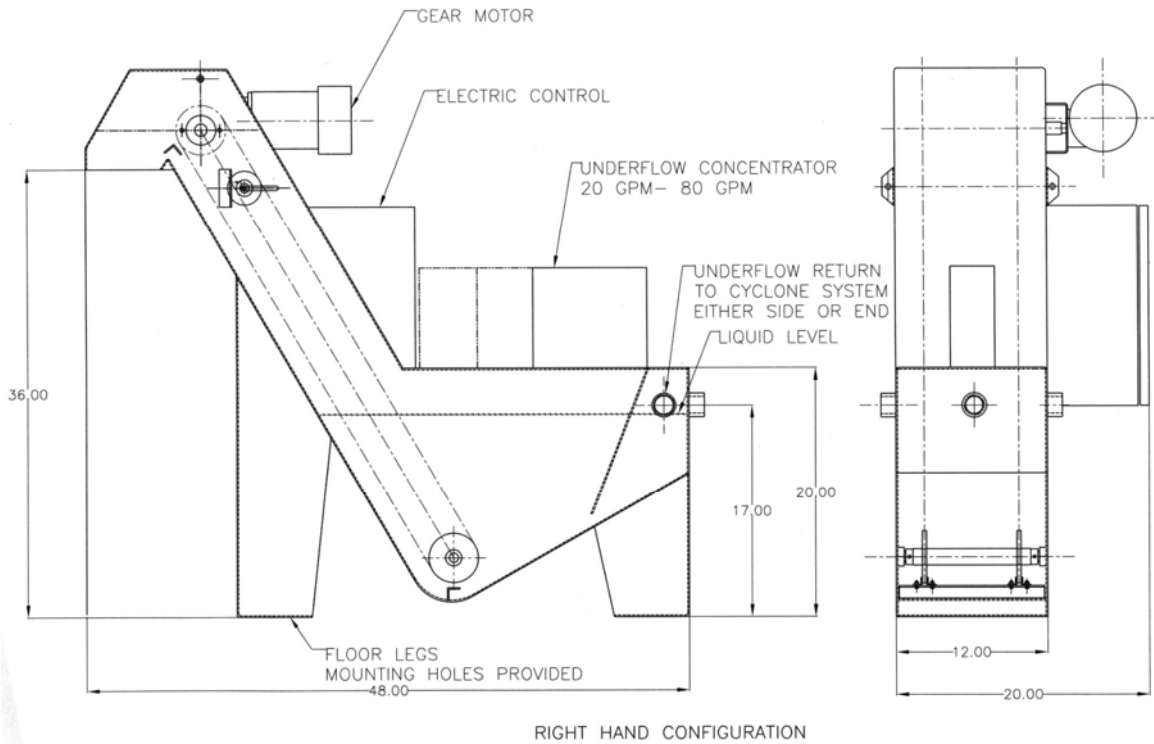




# CYCLOTRON PRODUCTS, INC.

Underflow Conveyors

# UFC Series



## SPECIFICATIONS

## UFC

Flow Rate GPM	20-80
Concentrator Width	4"
Length	Up to 23"
Discharge Height	36"
Coolant Return Height to Tank	17"
Drive Motor HP	1/6
Coolant Holding Capacity	25 Gal.
Configuration	Right-hand or Left-hand

## COMPONENT SPECIFICATIONS

**Frame:** #12 Ga sheet steel fully welded and liquid tight.

**Drive Shaft/Idler Shaft:** On bearings.

**Drive Motor:** Fractional HP direct mounted to drive shaft.

**Chains:** Roller type with attached wipers.

**Painting:** Two part epoxy primer and finish coat, any color specified.

**Electric Control:** Main shut-off, timers, lights and motor protection. 230 or 460 three-phase operation.

Specifications are subject to change without prior notice.