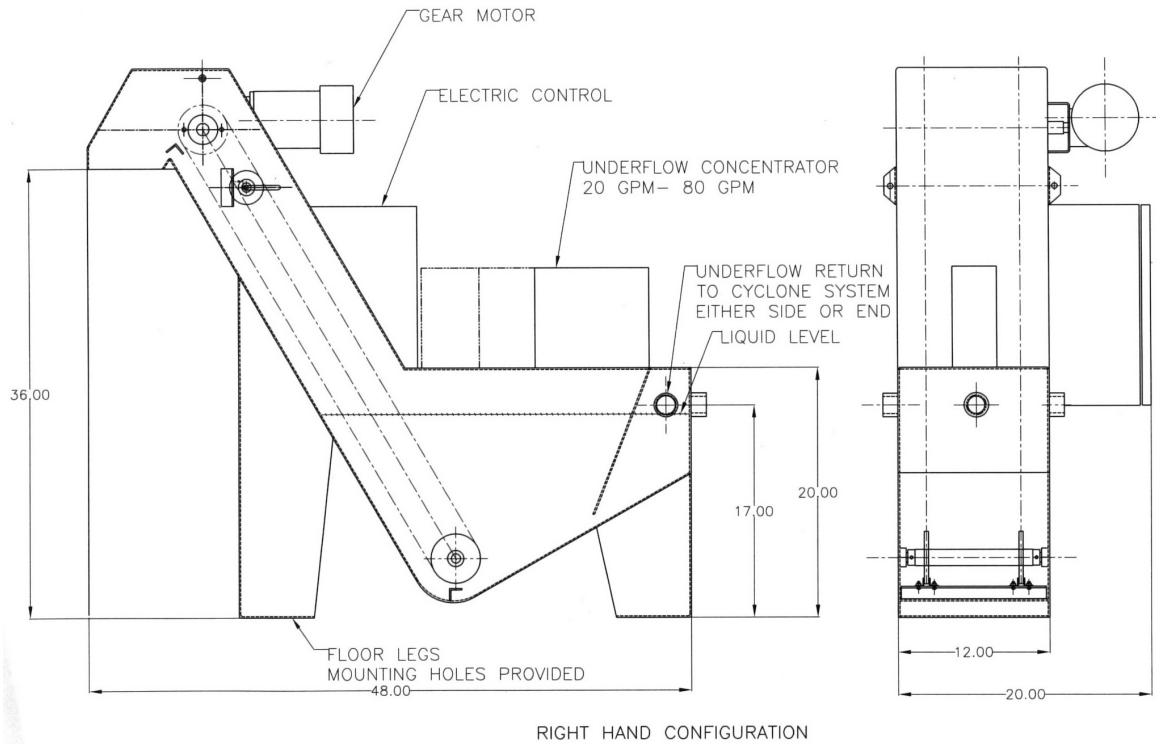




# CYCLOTRON PRODUCTS, INC.

Underflow Conveyors

# UFC Series



## SPECIFICATIONS

Flow Rate GPM

Concentrator  
Width  
Length

Discharge Height

Coolant Return  
Height to Tank

Drive Motor HP

Coolant Holding  
Capacity

Configuration

## UFC

20-80

4"  
Up to 23"

36"

17"

1/6

25 Gal.

Right-hand  
or Left-hand

## COMPONENT SPECIFICATIONS

**Frame:** #12 Ga sheet steel fully welded and liquid tight.

**Drive Shaft/Idler Shaft:** On bearings.

**Drive Motor:** Fractional HP direct mounted to drive shaft.

**Chains:** Roller type with attached wipers.

**Painting:** Two part epoxy primer and finish coat, any color specified.

**Electric Control:** Main shut-off, timers, lights and motor protection. 230 or 460 three-phase operation.

Specifications are subject to change without prior notice.