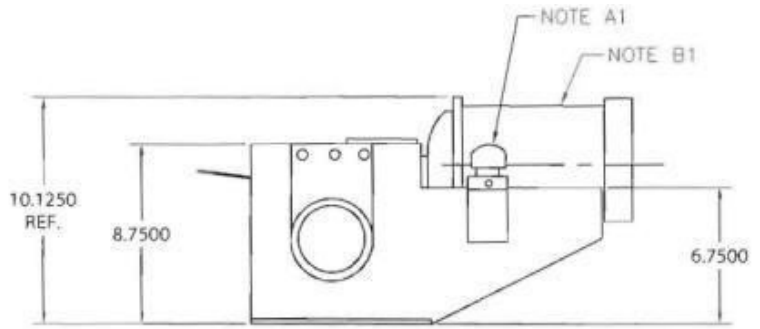
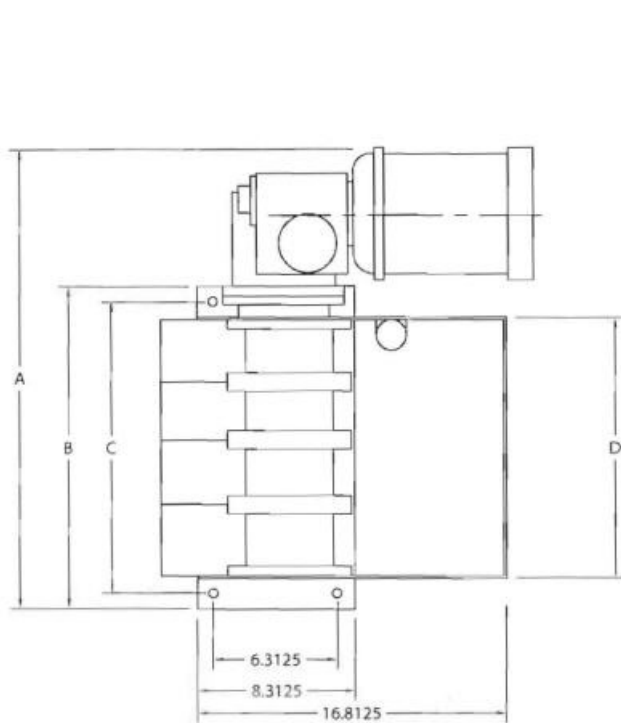




CYCLOTRON PRODUCTS, INC.

Magnetic Separators

CTMD-XX Series



NOTE A1: PAPER ADVANCE PROBE CAN BE MOUNTED ON LEFT OR RIGHT
 NOTE B1: DRIVE MOTOR CAN BE MOUNTED LEFT OR RIGHT, VERTICAL OR HORIZONTAL

MODEL	GPM Water	GPM Oil	Dim A "	Dim B "	Dim C "	Dim D "
CTMD-10	10-14	5	17.4375	10.4375	9.1875	7.4375
CTMD-15	15-19	8	20.8125	13.8125	12.5625	10.8125
CTMD-20	20-29	10	24.1250	17.1250	15.8750	14.1250
CTMD-30	30-39	15	30.7500	23.7500	22.5000	20.7500
CTMD-40	40-49	20	37.4375	30.4375	29.1875	27.4375
CTMD-50	50-59	25	44.0625	37.0625	35.8125	34.0625

COMPONENT SPECIFICATIONS

Housing: High carbon steel.

Painting: Two part epoxy finish coat, any color specified.

Scrapper Blades: 1/8" aircraft aluminum.

Magnets: Ceramic 8 permanent.

Bearings: Roller type—sealed.

Electric Gear Motor: TEFC for 230/460/3/60 Hz. operation.

Flow rates are calculated based on gravity flow.

Flow rates are also dependent on swarf load.

Special systems designed to specifications.

Specifications are subject to change without prior notice.