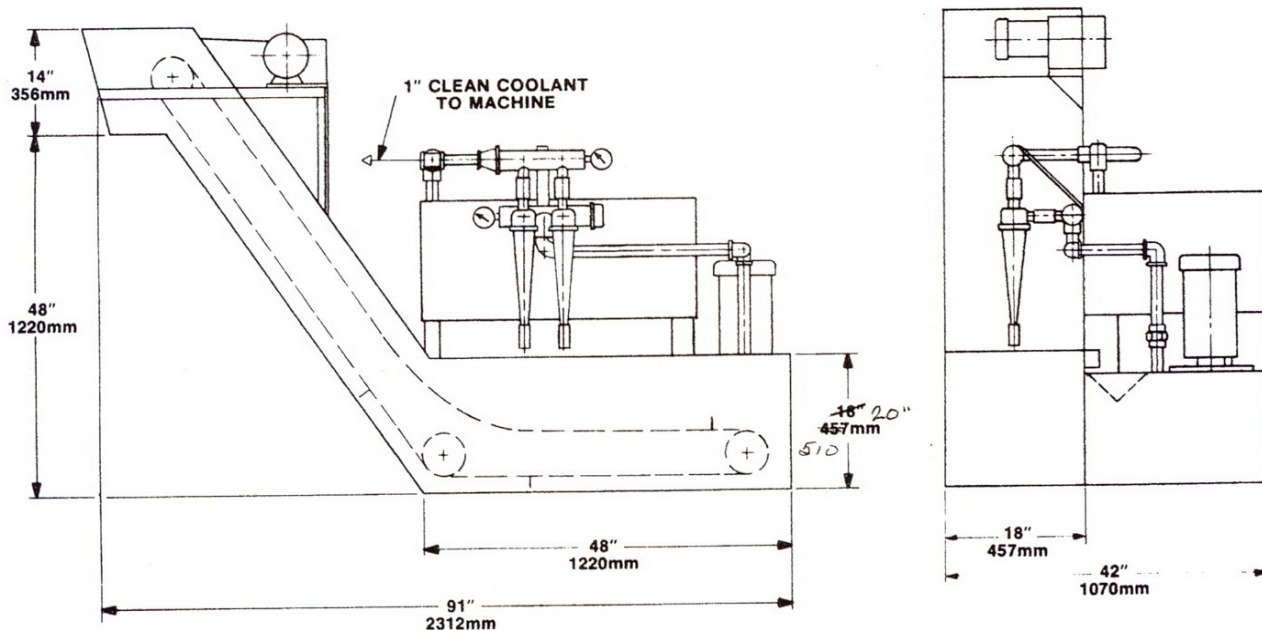




CYCLOTRON PRODUCTS, INC.

Hydrocyclonic Coolant Filtration Systems

170DC SERIES



SPECIFICATIONS	CT40-170DC
Flow Rate Gallons per Minute	40
Tank Capacity Gallons	100
Drag Out Capacity Gallons	70
Inlet Height Inches/mm	18/457
Cyclone Pump Horsepower	2
Number of Cyclones in System	2

COMPONENT SPECIFICATIONS

Piping: All piping schedule 40 black iron.

Sheet Metal: 11Ga. hot rolled steel.

Painting: Two part epoxy primer and finish coat, any color specified.

Screened Inlet: Perforated steel, 1/8" diameter holes.

Relief Valve: Stainless steel piston, cast iron housing.

Gages: Inlet 0-60 PSI, outlet 0-30 PSI.

Cyclone Pump: Cast iron with centrifugal impeller.

Electric Motors: TEFC for 230/460/3/60 Hz. operation.

OPTIONAL:

Electrical Controls: NEMA 12 enclosure with AC manual starter, start and stop push buttons.

Clean Coolant Pump: Rated flow up to 25 PSI.

Special systems designed to specifications.

Specifications are subject to change without prior notice.